

Whole House Pure Water System

Flow
1,825 gallons/day

Flow
1.26 gallons/min

Whole House Pure Water System

Bluewater's Whole House Reverse Osmosis System provides up to 1,825 gallons per day of 95-99% pure water free of Lead, Cysts, Bacteria, PFA's, Chlorine, Fluoride and other contaminants that pose potential health risks throughout the home. Using Pro 400 water purifiers with patented SuperiorOsmosis™ this system provides up to 1,825 gallons per day and is especially adept at purifying homes fed by well water systems.

Our Whole House Pure Water System will service homes large and small from 2 to more than 4 persons with up to 4 bathrooms. Depending on the application a typical system consists of several specific parts that will include:

- Water Softener with 30K or 60K grain capacity
- PrePro-CatC with Catalytic Carbon and 5 Micron Sediment Pretreatment
- Pro 400B Reverse Osmosis water purifier with capacity to filter brackish water with TDS up to 7,500ppm
- PostPro-P post filter with Polyphosphate for piping corrosion protection
- 100 through 500 gallon poly storage tank with fittings
- Re-pressurization pump with up to 24 gpm capacity
- Clairify12 post filter or UV filter to provide storage tank biocide protection
- Aluminum storage cabinet with doors or shelves

Features and Benefits

- Direct flow, integrated booster pump
- Cost-saving low energy use
- Reduces scale and corrosion problems related to high TDS, water hardness and chlorides
- Flow rate of up to 1,825 GPD, 76 GPH, 1.2 GPM
- Standard leak detection, water quality indicator and filter indicators
- Low pressure protection stop and automatic restart
- WQA certified to NSF 58 standards
- Quick connect/push lock fittings
- ½" OD tubing inlet and outlets
- Clean, compact design eliminates external tubing and fittings

BWWHS-Pro400 Whole House Application

- **919240992 PrePro-CatC:**
Sediment & Chloramine removal using Catalytic Carbon Prefiltration
- **919240150 Pro 400C-HF Water Purifier:**
High flow reverse osmosis purifier
For TDS greater than 1,500 PPM up to 7,500 PPM, Bluewater requires the Brackish Model 919240155
- **919241004 PostPro-P:**
Polyphosphate filter for piping corrosion protection.
- **Clairify Filter:**
Clairify is a direct replacement for UV lights eliminating the need for UV bulbs, power other maintenance. 5 year media life is also NSF certified.

Requirements of Inlet Water

Pressure [psi]	29-145
Flow [l/min]	>10
TDS [mg/l]	<1,500
Conductivity [μ S/cm, 25 °C]	<2,000
Temperature	2-35 [°C] / 35.6-95 [°F]
Hardness [mg/l]	<200
Iron Fe(II) [mg/l]	<1.5
Iron Fe(III) [mg/l]	<0.3
Turbidity [FNU]	<0.5
TDS [mg/l] (Pro 400B)	<7500

Power Requirements

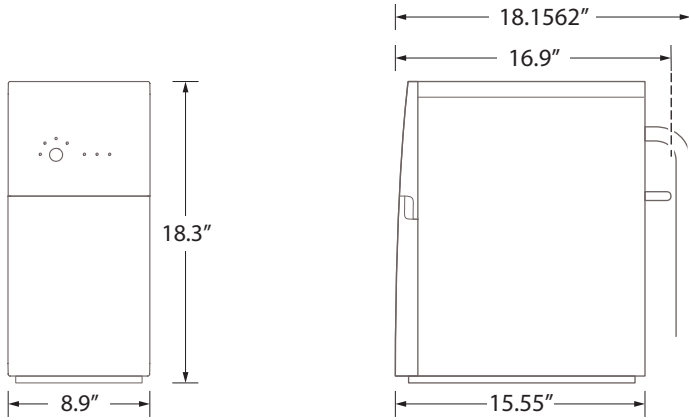
Voltage	120V ~ 60 Hz
Power [Amps]	6
Plug / Type	Grounded American / B

Filter Maintenance

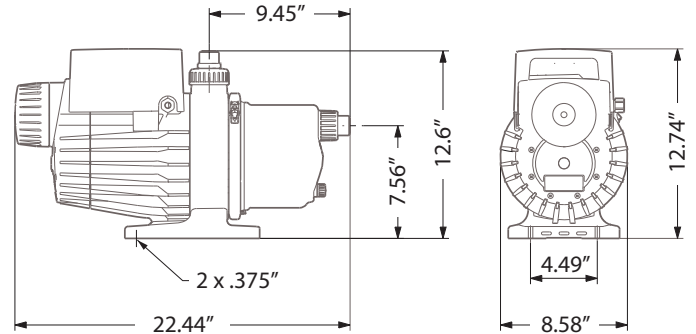
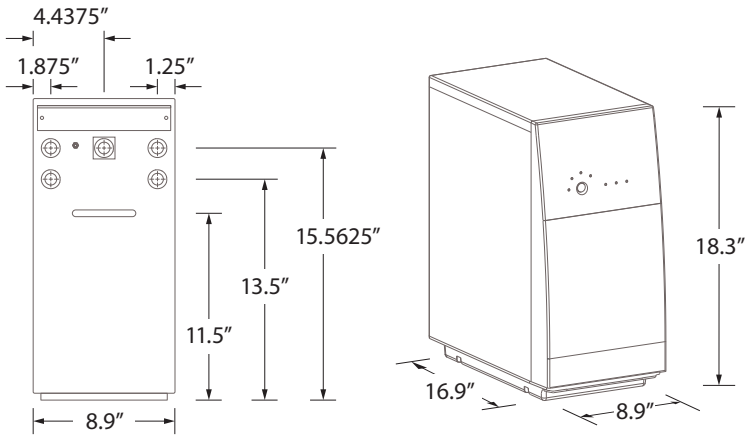
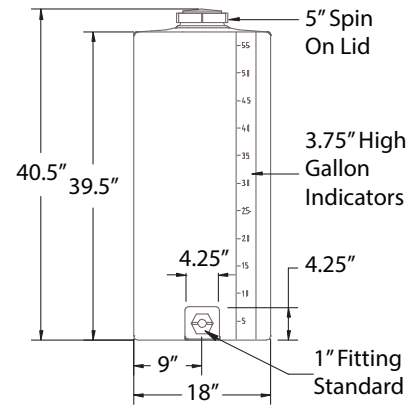
Recommended frequency between membrane and filter changes may vary by water quality and use.

PrePro-CatC Sediment	3-6 months
PrePro-CatC Catalytic GAC	6-12 months
Pro 400 Sediment prefilter	4-6 months
Pro 400 GAC prefilter	4-6 months
Pro 400 High Flow Membrane	4-6 years
PostPro-P Polyphosphate clarify	3-6 months
PostPro-P Coconut Shell GAC	6-12 months

PrePro-CatC, Pro 400C-HF and PostPro-P:
 All purifier units share the same dimensions.



200 - 500 Gallon Storage Tank:
 Storage requirements will vary based on location.



15 - 24 Gallon Per Minute Pump:
 Pump requirements will vary based on location.

Bluewater Whole House Pure Water Solution:
 Provides enough pure water to address all household water needs.

