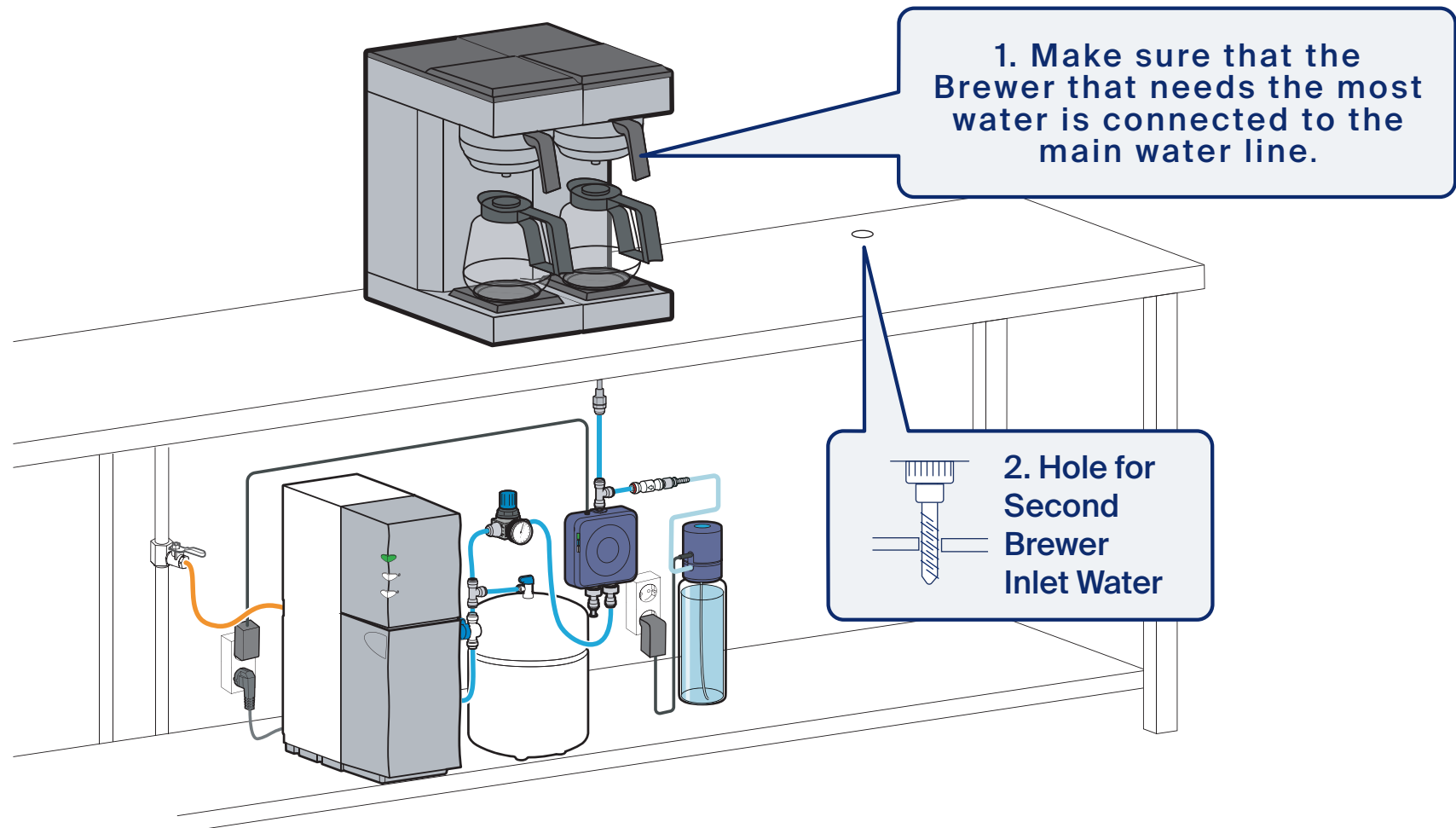


Easy to Install

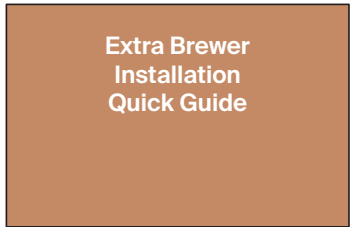
You'll find everything you need to know to install your new Extra Brewer in this Quick Guide.
Or scan the QR code to for a user-friendly online version of the guide.



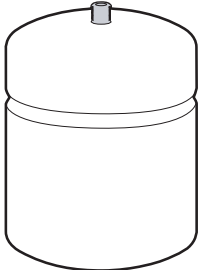
Preparation Before Installation:



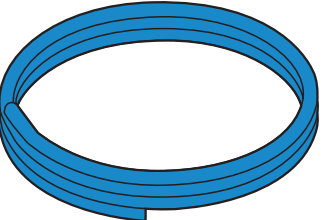
What is Included



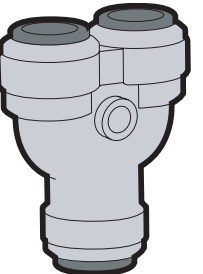
Installation Manual



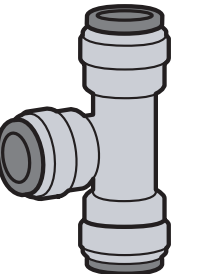
1/2 Gallon Pressure Tank



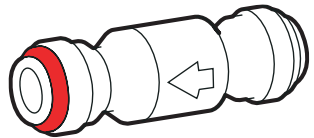
2m 3/8" Tubing



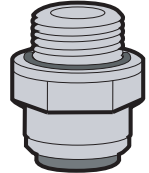
3/8" Divider



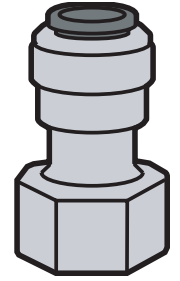
3/8" Tee



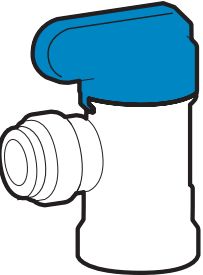
Check Valve



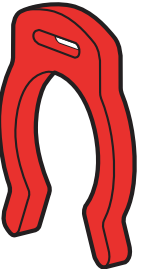
3/8" - 1/4 BSP Adapter



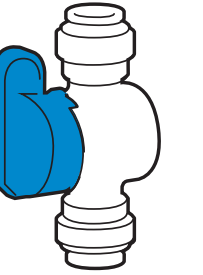
3/8" - 1/4 BSPP Female Adapter



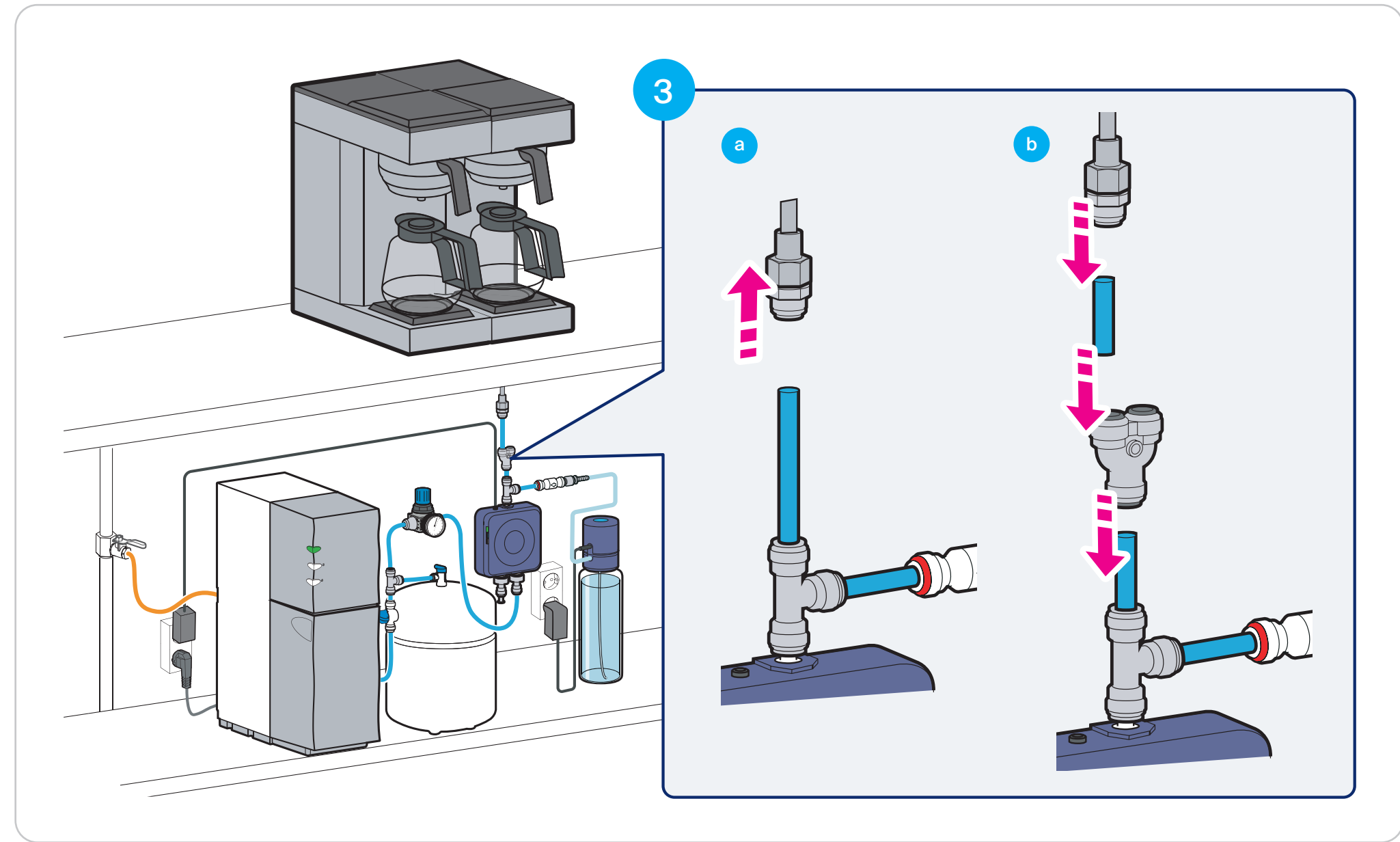
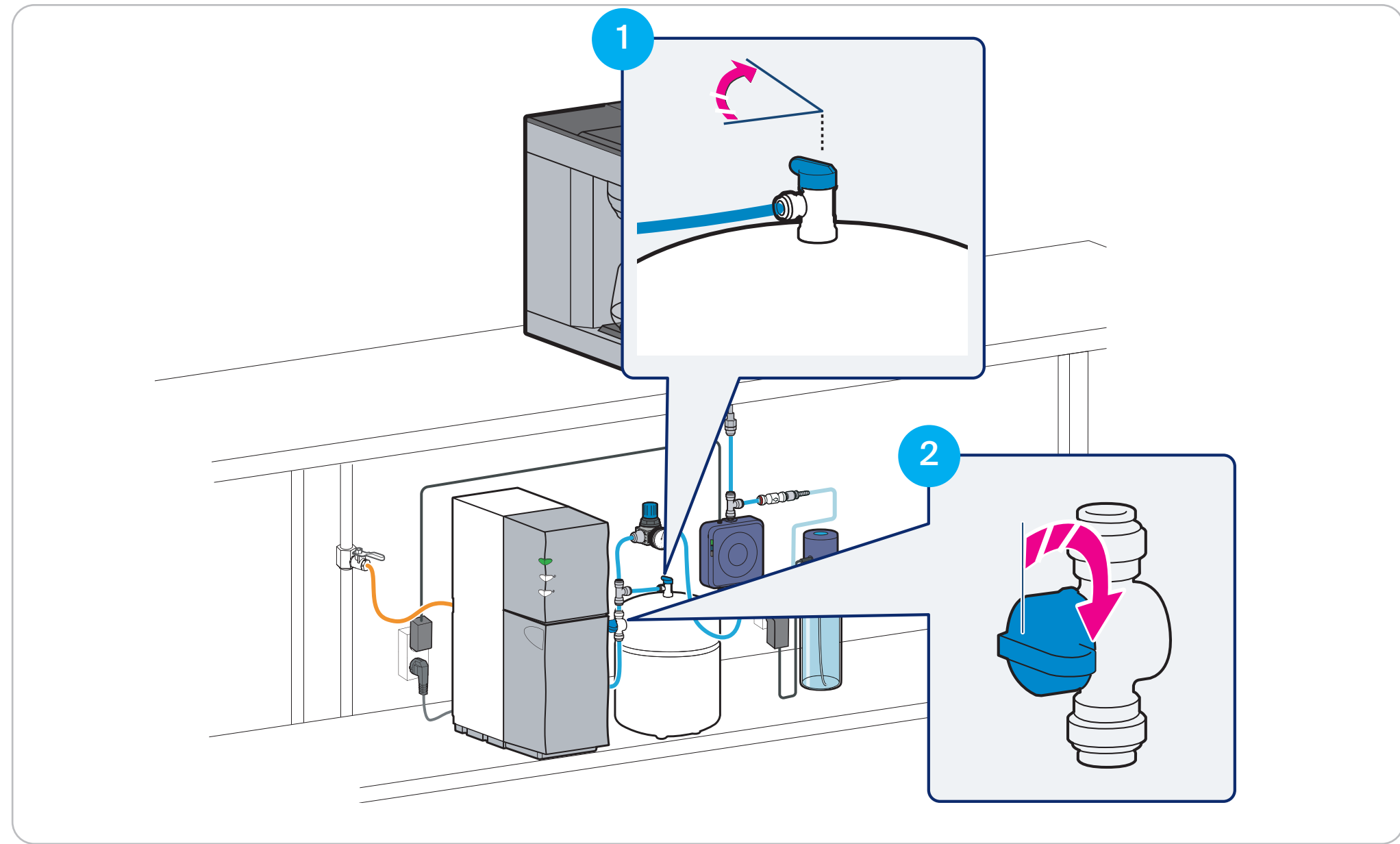
3/8" Tank Valve

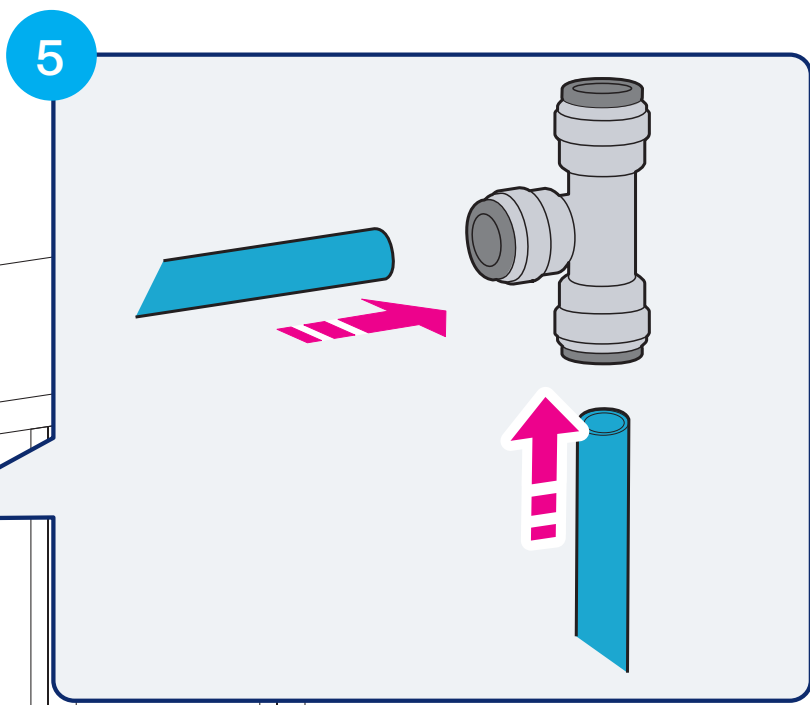
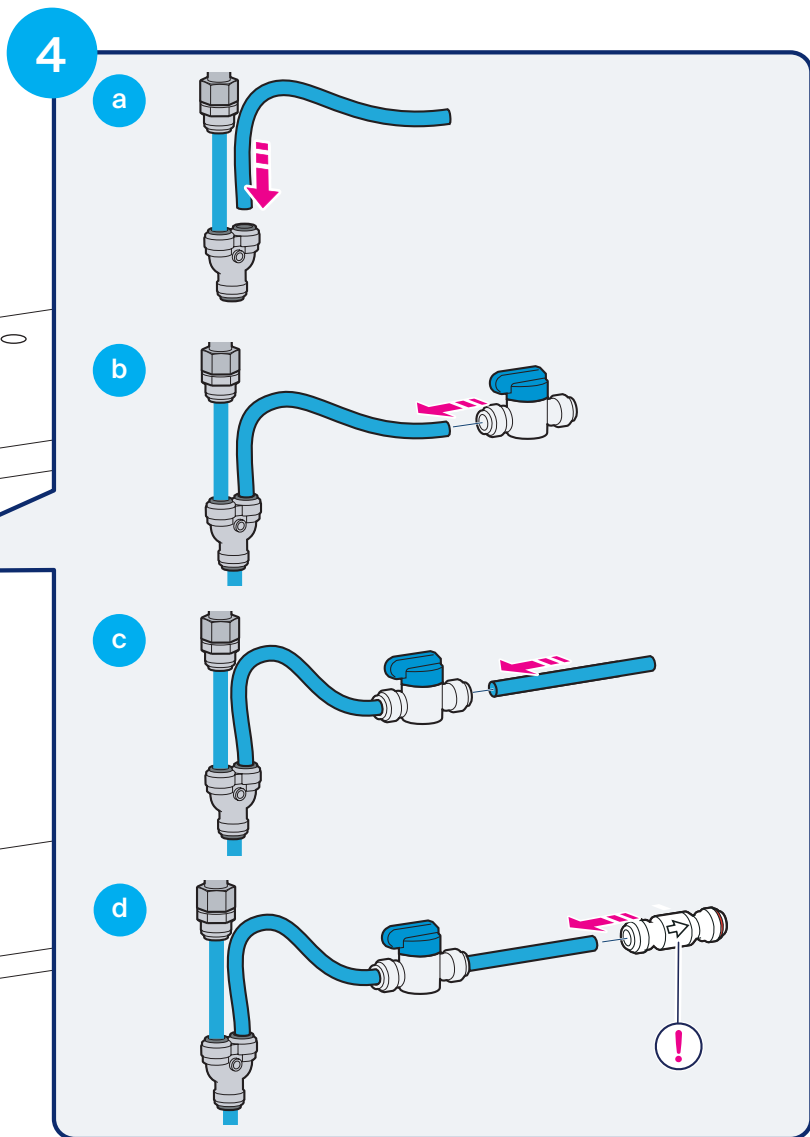


13 x 3/8" Locking Clip

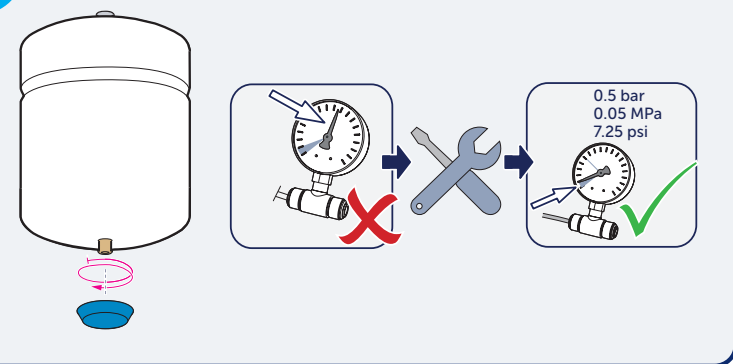


3/8" Valve





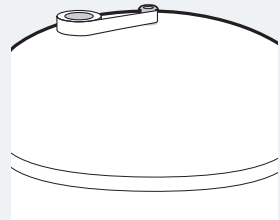
6



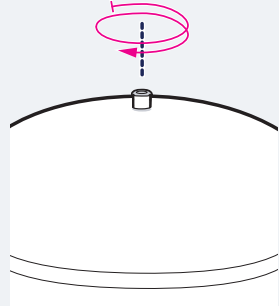
7

a

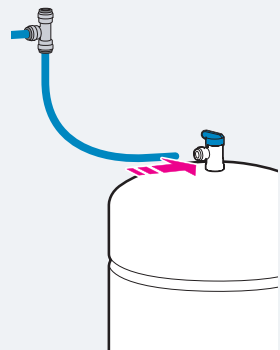
5-6



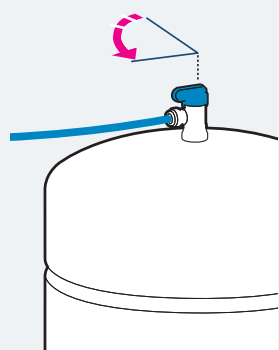
b



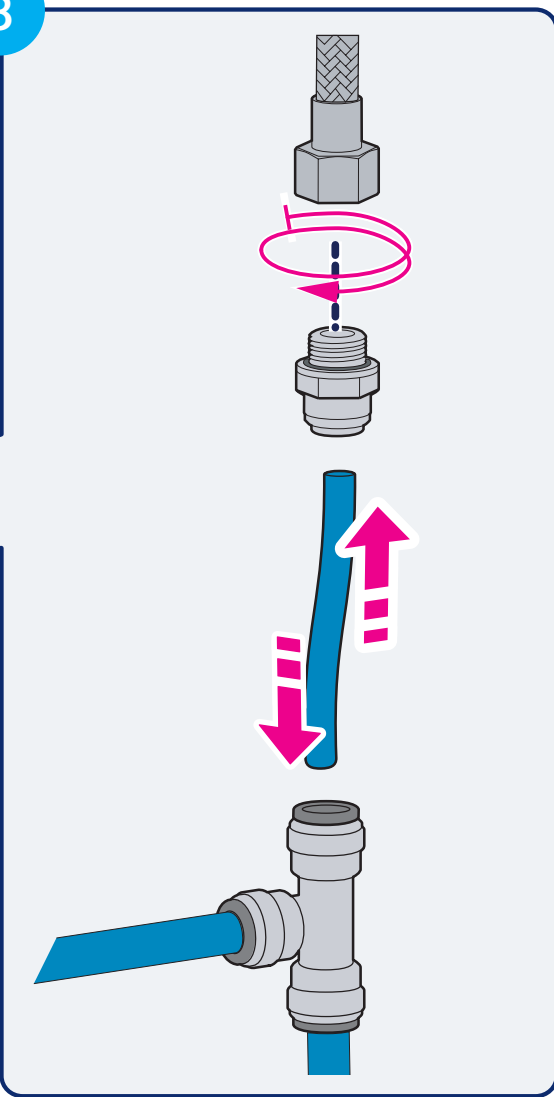
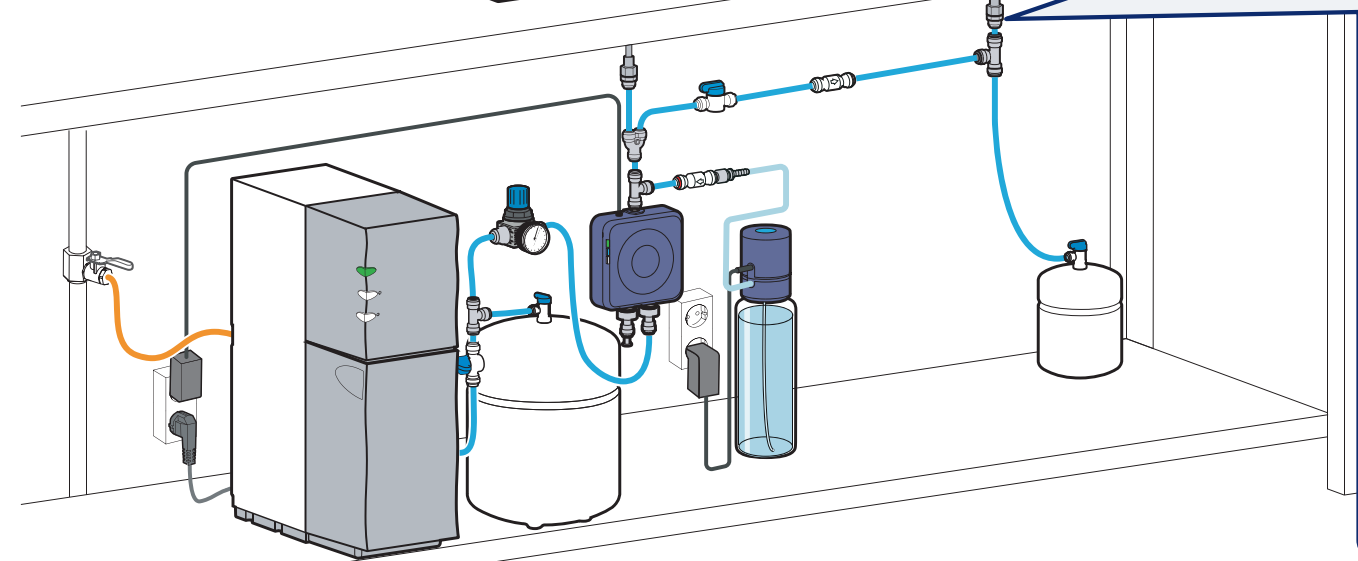
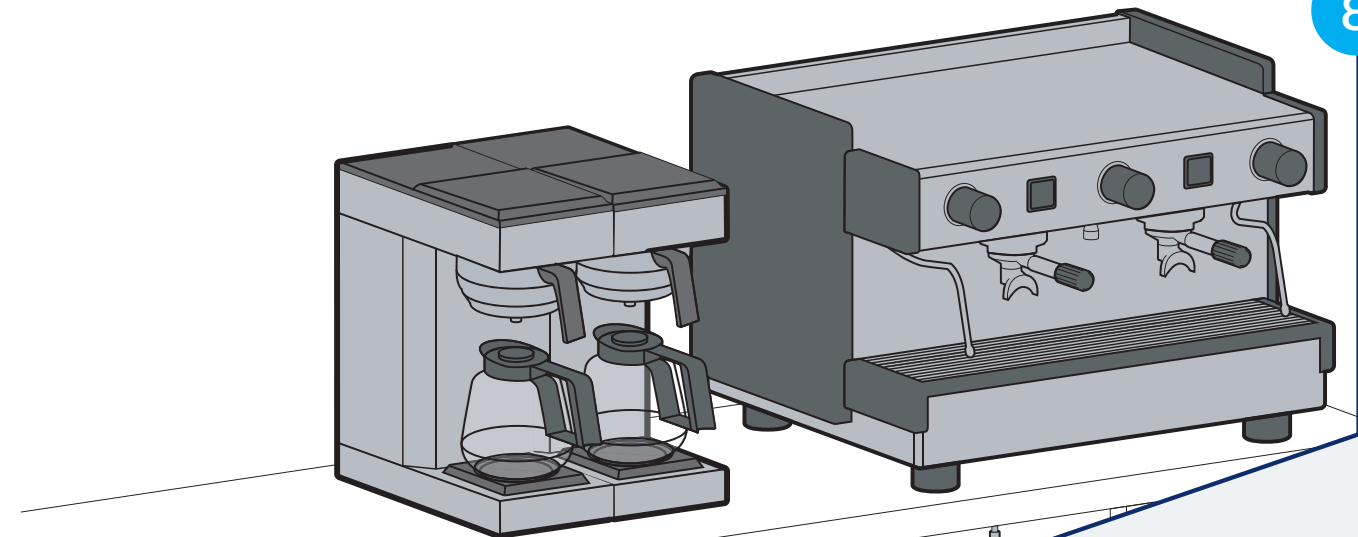
c

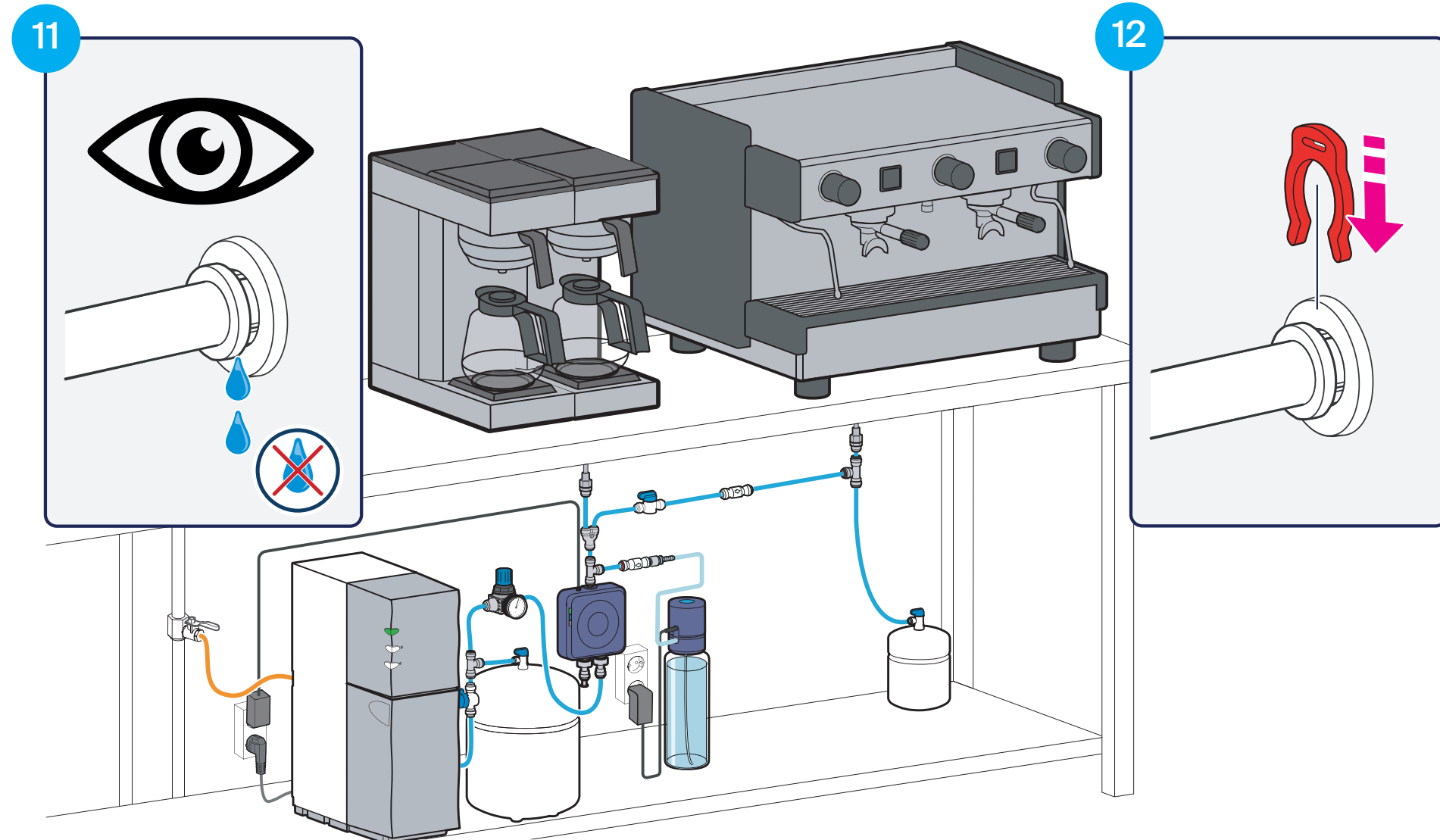
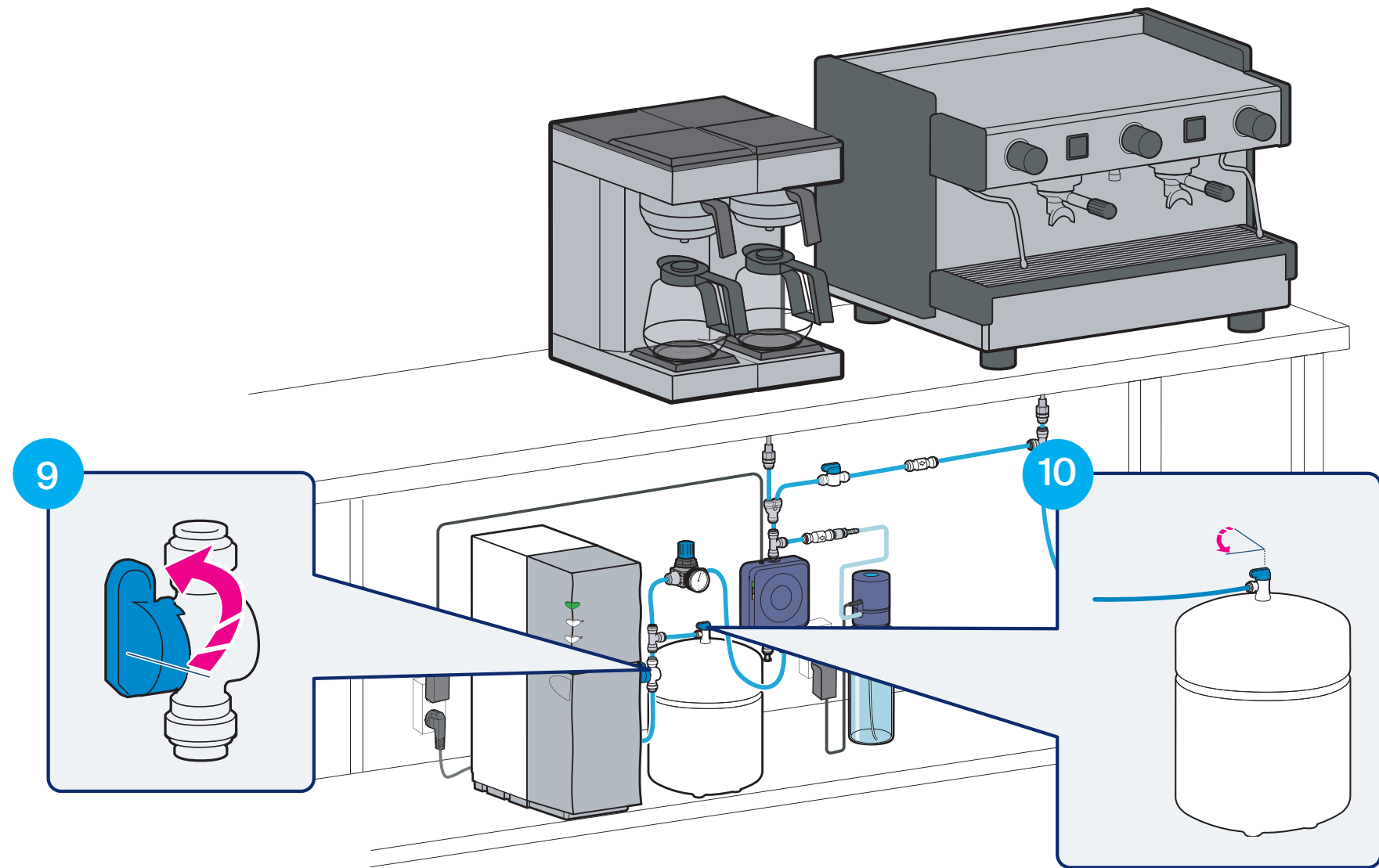


d



8





13

Set up the system using the Bluewater Serve App.

