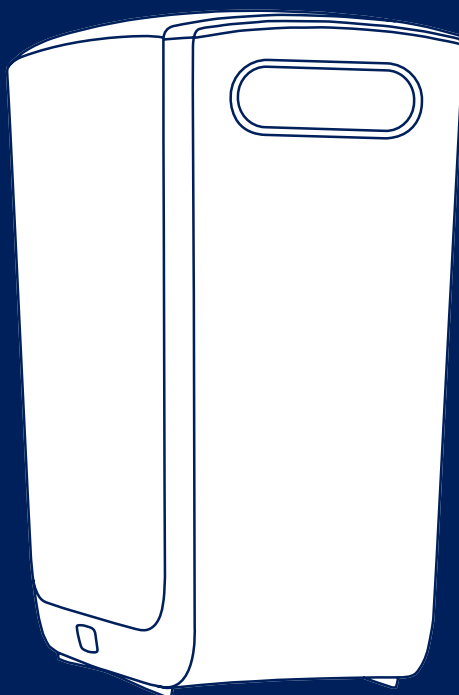


SPARE PARTS, CONSUMABLES AND
ACCESSORIES CATALOG – CH

FOR PREVIOUS MODELS SPECIFIED ON PAGE 3



BLUEWATER CLEONE

WATER PURIFIER



Table of contents

Spare parts, consumables & accessories	03
Models	03
Components	04
Components description	07
Accessories and consumables	09
Order	10
Disclaimer	10

This manual is made to be printed as a double sided A4 or A5 booklet.

Spare parts, consumables & accessories

The Bluewater Cleone water purifier is designed to turn your tap water into healthier drinking water. Innovated with love in Sweden, Bluewater's technology improves quality of life, health and wellbeing by removing practically all contamination, including microorganisms, pesticides, heavy metals and toxins.

Regular maintenance, genuine spare parts and consumables assure the performance and lifespan of your product. To eliminate mistakes, when ordering Spare Parts, always start by identifying your Model Name and Product Number and use them to determine the correct Spare Part Number.

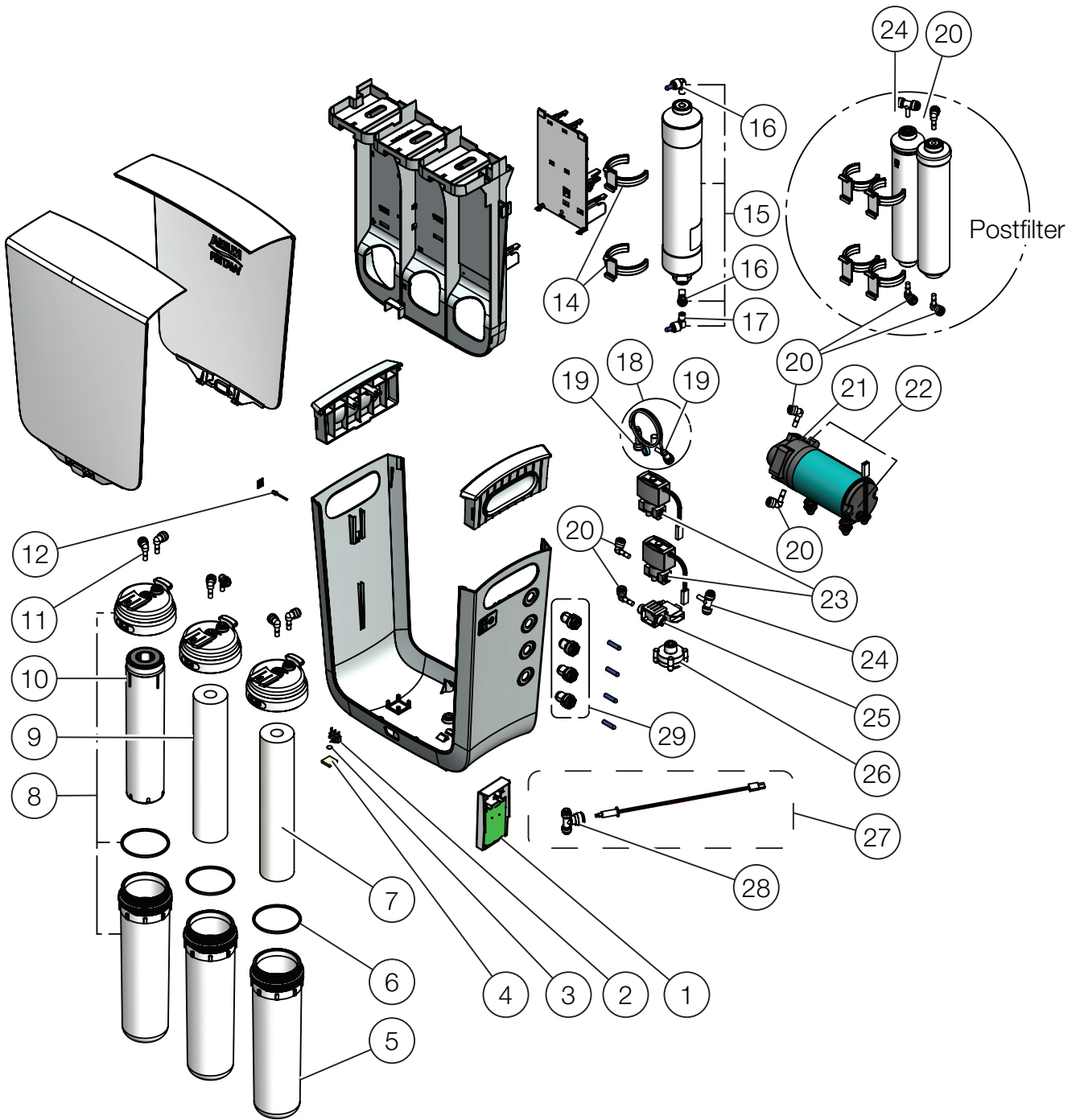
Please note that this catalogue is updated regularly, which means the Part Number will also change regularly. You can always find the latest edition of this document at www.bluewatergroup.com

This catalog specifies spare parts and consumables for the models listed below.

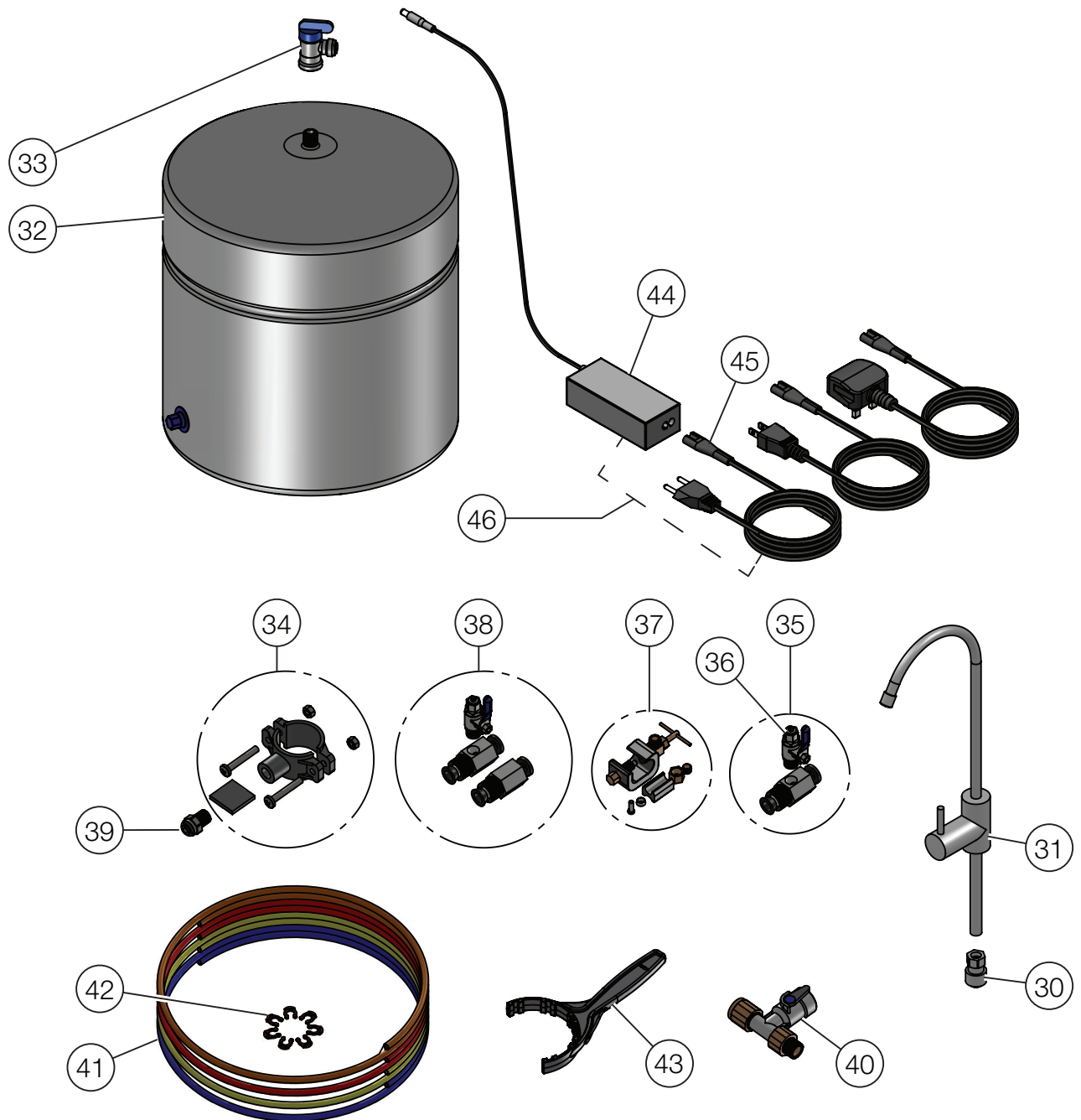
Product models

Models	Product No.	Reference
Cleone 2 Germany	91-102-0208	A
Cleone 2 France	91-102-0212	A
Cleone 2 Nordic	91-102-0214	A
Cleone 2 USA	91-102-0224	A
Cleone 2 MIN Poland	91-102-0311	B
Cleone 2 UV Portugal	91-102-0418	C
Cleone 2 (MIN-UV) Italy	91-102-0709	D
Cleone 2S Sweden	91-104-0227	E
Cleone 2S (MIN-UV) Italy	91-104-0710	F
Bluewater Cleone Classic Euro	91-122-0240	A
Bluewater Cleone Classic INT	91-122-0241	A
Bluewater Cleone MIN Euro	91-122-0340	B
Bluewater Cleone UV Euro	91-122-0440	C
Bluewater Cleone MIN-UV Euro	91-122-0740	D
Bluewater Cleone S Classic Euro	91-124-0240	E
Bluewater Cleone S MIN-UV Euro	91-124-0740	F

Product components

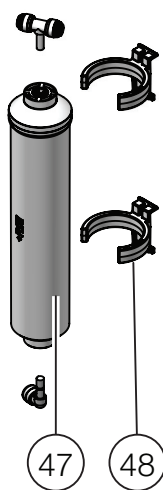


Product components

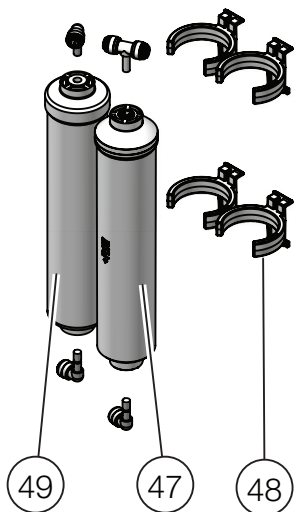


Product components

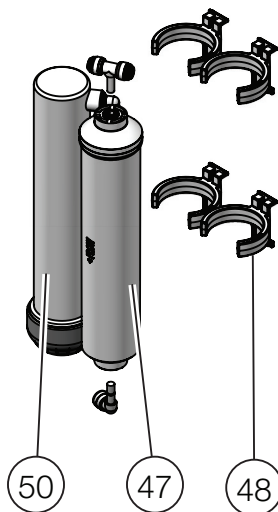
Classic
C-INLINE-C



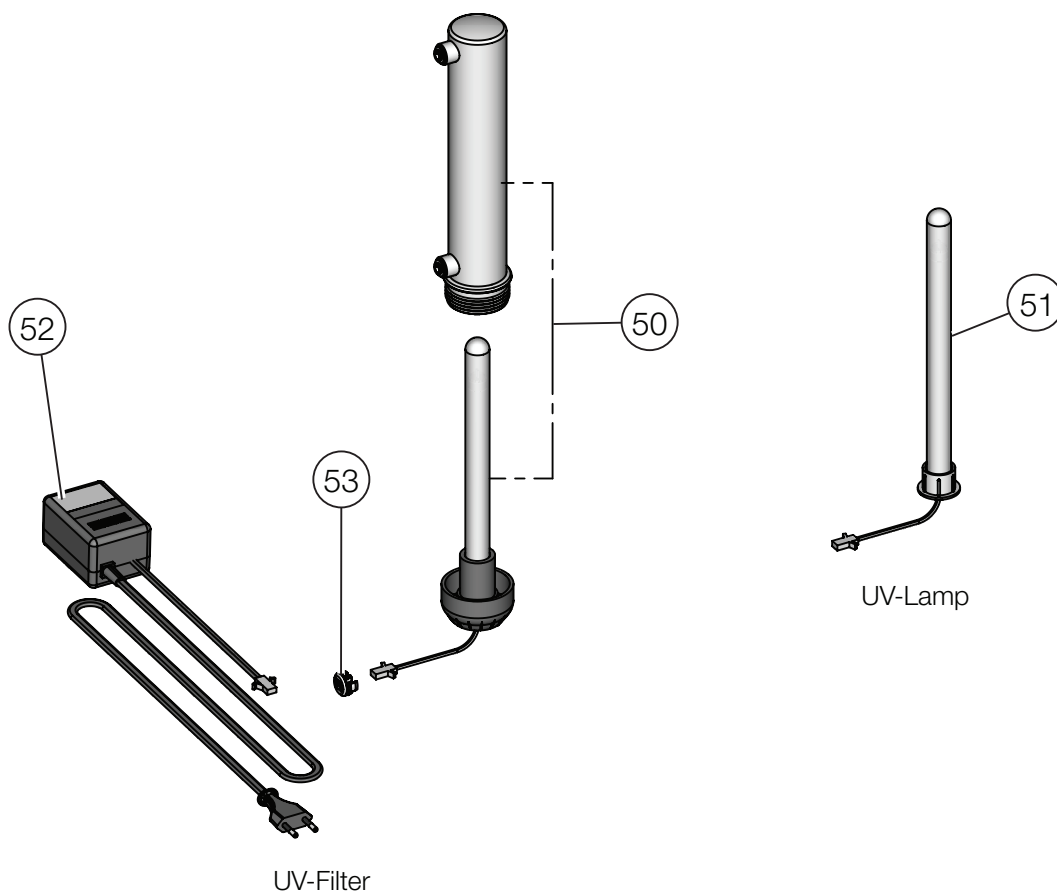
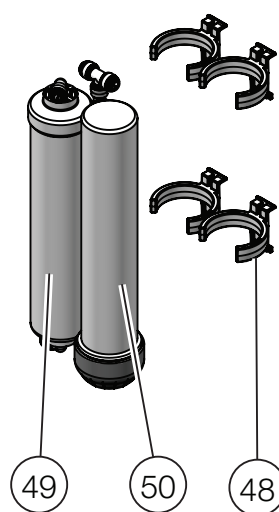
MIN
C-INLINE-C and Mineral



UV
C-INLINE-C and UV-Filter



MIN-UV
Mineral and UV-Filter



Product component description

Pos	Spare part No.	Position description	Reference	Units in box
1	55-201-0020-SP	"Electronic control board (PCB-AF), 2-models EXPIRED, REPLACED BY 80-500-0129-SP"	A, B, C, D	5
1	55-201-7120-SP	Electronic control board (PCB-FX3A) for S-models EXPIRED, REPLACED BY 80-500-0105-SP	E, F	5
1	80-500-0129-SP	Electronic control board, replacement kit for PCB-AF in old 2-models	A, B, C, D	5
1	80-500-0105-SP	Electronic control board, replacement kit for PCB-FX3A in old S-models	E, F	5
2	55-201-0025-SP	Micro switch, leak detection	All Models	10
3	55-201-9001-SP	Adhesive sticker for swelling sponge EXPIRED, REPLACED BY 55-201-0001-SP	All Models	50
4	55-201-0001-SP	Swelling sponge, leak detection, incl adhesive sticker	All Models	25
5	55-201-0030-SP	Filter housing, container EXPIRED, REPLACED BY 55-201-0033-SP	All Models	15
6	55-201-0031-SP	Sealing gasket for filter housing	All Models	30
7	96-100-0100	CL-20 Sediment prefilter for Cleone, 20 micron	All Models	70
8	55-201-0033-SP	Filter housing complete	All Models	5
9	96-100-0200	CL-5 Sediment prefilter for Cleone, 5 micron	All Models	70
10	96-100-0300	CL-C Activated carbon prefilter for Cleone	All Models	30
11	50-015-3301-SP	Quick connector, elbow, long stem 1/4" to hose 1/4"	All Models	5
12	55-201-0029-SP	Blue indication LED	All Models	10
14	55-201-0023-SP	Membrane clip, for Cleone produced until 2015	All Models	10
15	96-100-0600	Membrane service kit, 50 GPD	All Models	32
15	96-100-0700	Membrane service kit, 75 GPD	For old HF (High Flow) models	32
16	50-015-2010-SP	Quick connector, elbow, thread 1/8" to hose 1/4"	All Models	50
17	50-909-0077-SP	Quick connector, elbow, thread 1/8" to hose 1/4", blue, with check valve	All Models	10
18	50-919-0420-SP	Complete flow restrictor for 43/50 GPD membrane	All Models	10
18	50-919-0980-SP	Complete flow restrictor for 75 GPD membrane	For old HF (High Flow) models	10
19	50-015-9402-SP	Quick connector, tee, stem 1/4" to hose 1/4" to hose 3mm, to flow restrictor	All Models	5
20	50-015-1301-SP	Quick connector, elbow, short stem 1/4" to hose 1/4"	All Models	5
21	55-201-6621-SP	"Pump head for booster pump (P21) EXPIRED, REPLACED BY 80-500-0150-SP"	All Models	8
22	55-201-0021-SP	"Booster pump (P21) for Cleone EXPIRED, REPLACED BY 80-500-0150-SP"	All Models	8
22	80-500-0150-SP	Booster pump 50 GPD SC	All Models	8
22	55-201-9021-SP	Booster pump (P21-400) for 75 GPD membrane	For old HF (High Flow) models	8
23	55-201-0007-SP	Valve, solenoid, for Cleone	All Models	20
24	50-015-9401-SP	Quick connector, tee, stem 1/4" to hose 1/4" - 1/4"	All Models	5
25	50-909-9106-SP	Tank pressure switch (TRST2) for Cleone	All Models	5
26	50-909-0112-SP	Low pressure switch (LPS) for Cleone	All Models	5
27	55-201-0061-SP	"TDS-sensor for Cleone EXPIRED, REPLACED BY 80-500-0086-SP"	E, F	10
27	80-500-0086-SP	TDS-sensor kit for Cleone	E, F	10
28	50-015-9001-SP	"Quick connector, equal tee, 1/4" EXPIRED, REPLACED BY 80-500-0086-SP"	E, F	10
29	80-500-0100-SP	Quickconnect adaptor kit, BLU/YEL/RED/ORN (20 pcs, 5 pcs of each)	All Models	1
30	50-015-1601-SP	Quick connector, thread 7/16" to hose 1/4", to faucet	All Models	5
31	50-909-0191-SP	Drinking water faucet, Quarter turn	All Models	5

Product component description

Pos	Spare part No.	Position description	Reference	Units in box
32	93-100-0200	"Pressure tank, white, 12L EXPIRED, REPLACED BY 93-100-0300"	All Models	1
32	93-100-0300	Pressure tank, white, 17L	All Models	1
33	50-017-2001-SP	Quick connector, valve elbow, thread 1/4" to hose 1/4"	All Models	5
34	50-909-0007-SP	Drain saddle connector, 1/4"	All Models	5
35	50-113-0017-SP	Feed water connection kit, 1/2" (INS12M)	All Models	5
35	50-113-0019-SP	Feed water connection kit, 3/8" (INS38M)	All Models	5
36	50-909-0109-SP	Metal ball valve 1/4"	All Models	5
37	50-909-0063-SP	"Feed water connector, self piercing (INS6) EXPIRED"	All Models	50
38	50-909-0093-SP	"Feed water connection kit, 3/4", for wall mounted kitchen faucet (INS34M) EXPIRED"	All Models	50
39	50-015-1002-SP	Quick connector, straight, thread 1/4" to hose 1/4"	All Models	5
40	50-113-7018-SP	Feed water connector, 3/8", w shut-off and check valve	All Models	5
41	50-909-0030-SP	1/4" PE tubing, blue	All Models	10m
41	50-909-0031-SP	1/4" PE tubing, yellow	All Models	10m
41	50-909-0032-SP	1/4" PE tubing, red	All-Models	10m
41	50-909-0033-SP	1/4" PE tubing, white	All Models	10m
41	50-909-0034-SP	1/4" PE tubing, orange	All Models	10m
42	55-201-0019-SP	Safety locking clip	All Models	10
43	55-201-0002-SP	Wrench for filter housing	All Models	10
44	80-100-0044-SP	"Power supply EXPIRED, REPLACED BY 80-500-0131-SP"	All Models	10
45	80-100-0045-SP	"Cable EU 2m for power supply EXPIRED, REPLACED BY 80-500-0131-SP"	Observe power plug	10
46	80-100-0058-SP	"Power supply with 2m EU cable EXPIRED, REPLACED BY 80-500-0131-SP"	Observe power plug	10
46	80-500-0131-SP	Power supply with 1,5m cable, EU/UK/US/CN	All Models	10
47	96-100-0400	CL-Inline-C Activated carbon postfilter for Cleone	A, B, C, E	28
48	55-201-0028-SP	Postfilter filter clip, for Cleone produced until 2015	All Models	10
49	96-100-0800	CL-Mineral filter	B, D, F	28
50	80-500-0001-SP	Body with UV-lamp for Cleone	C, D, F	10
51	50-909-9163-SP	Exchange UV-lamp for Cleone	C, D, F	25
52	55-201-9162-SP	Ballast (power supply), UV-lamp, for Cleone	C, D, F	10
53	55-201-0052-SP	Adaptor, UV-unit to frame	C, D, F	10
-	55-201-0035-SP	Cable harness for Cleone 2 models (NOT S-models)	A, B, C, D	10
-	55-201-6035-SP	Cable harness for Cleone 2S models (ONLY S-Models)	E, F	10
-	55-201-0050-SP	Disinfection agent, 1L	All Models	25

Accessories & consumables

Pos	Consumable No.	Position description	Units in box
7	96-100-0100	CL-20 Sediment prefilter for Cleone, 20 micron	70
9	96-100-0200	CL-5 Sediment prefilter for Cleone, 5 micron	70
10	96-100-0300	CL-C Activated carbon prefilter for Cleone	30
15	96-100-0600	Membrane service kit, 50 GPD	32
15	96-100-0700	Membrane service kit, 75 GPD	32
47	96-100-0400	CL-Inline-C Activated carbon postfilter for Cleone	28
49	96-100-0800	CL-Mineral filter	28
51	50-909-9163-SP	Exchange UV-lamp for Cleone	25
32	93-100-0300	Pressure tank, white, 17L	1
-	96-100-9000	1-year Filter Service Pack (2x CL-5, 2x CL-20, 2x CL-C, 1x CL-Inline-C)	9
-	55-201-0050-SP	Disinfection agent, 1L	25

Order

It is important to assure that you have the right Product Number and have identified the correct Spare Part in the list above. More information can also be found in our service video that can be found on www.bluewatergroup.com or on www.youtube.com/BluewaterPure

Fill in our order template to place your order and e-mail it to order@bluewatergroup.com. The template can be found at www.bluewatergroup.com. For any additional questions please feel free to contact us.

Disclaimer

Bluewater water purification products should ideally be installed and maintained by qualified service professionals. Installing or maintaining Bluewater products without appropriate training may lead to serious property damage, personal injury, or death. We would therefore discourage independent installation or repairs. However if you intend to perform repairs yourself, please always use original spare parts. The information and instructions provided by Bluewater are intended for the use of Bluewater authorized service technicians and other qualified professionals.



Scan the QR code to visit the Bluewater Group website for more information about our products and how to order.



Scan the QR code to view the Instructional videos on the Bluewater YouKu channel.



Scan the QR code to view the Instructional videos on the Bluewater YouTube channel.

Bluewater is a world leading water purification company. Headquartered in Stockholm, Sweden, the company helps people and businesses in Europe, the USA, China and elsewhere in Asia enjoy the health and wellbeing benefits of cleaner, healthier tap water. Bluewater innovates, makes and sells compact water purifiers that harness the company's patented reverse osmosis technology to remove virtually all pollutants from tap water, including lead, bacteria, pesticides, medical residues, chlorine and lime-scale.

Please visit us at www.bluewatergroup.com



BLUEWATER

Danderydsgatan 11
SE-114 26 Stockholm
Sweden
E: info@bluewatergroup.com

www.bluewatergroup.com

